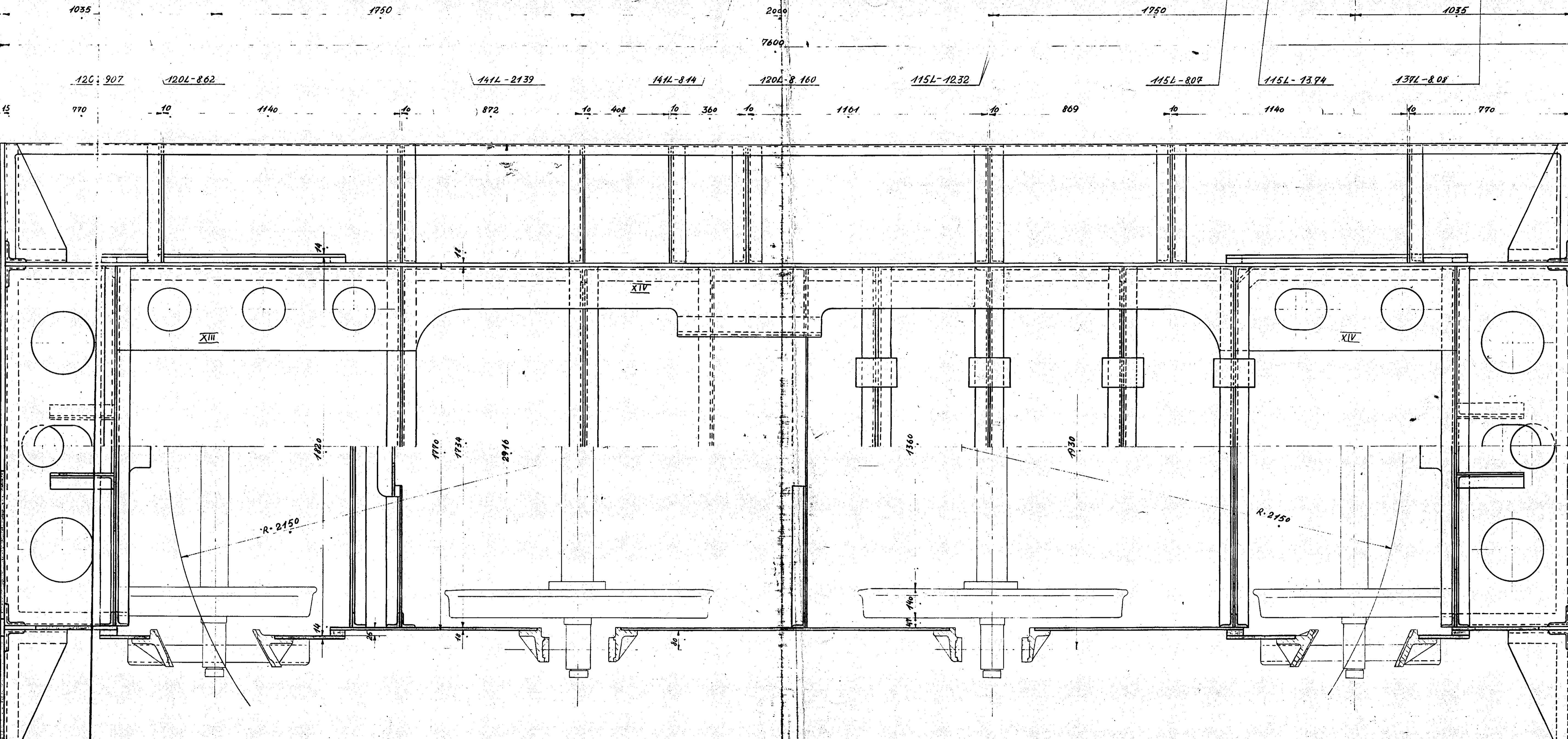
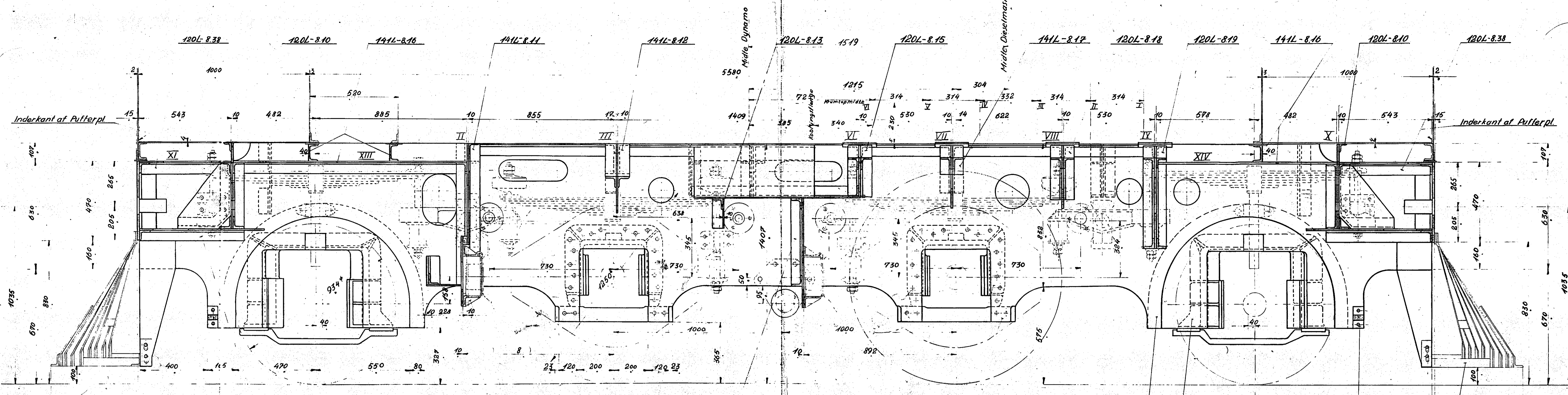


1:10		RT	
		TA	
		20-3-36	
<i>Rammeanordning</i>			141L-8.01
<i>Diesel-ol. 275⁰HK Motorloko</i>			



Mellem Puttermøller 1750

CM
MOR 92

E/S Rammeanordning Diesel-ol. 275cc HK Motorloko	1:10 20-3-36	R.T. TA 20-3-36
	141L-8.01	1:10 20-3-36
	1:10 20-3-36	1:10 20-3-36
	1:10 20-3-36	1:10 20-3-36